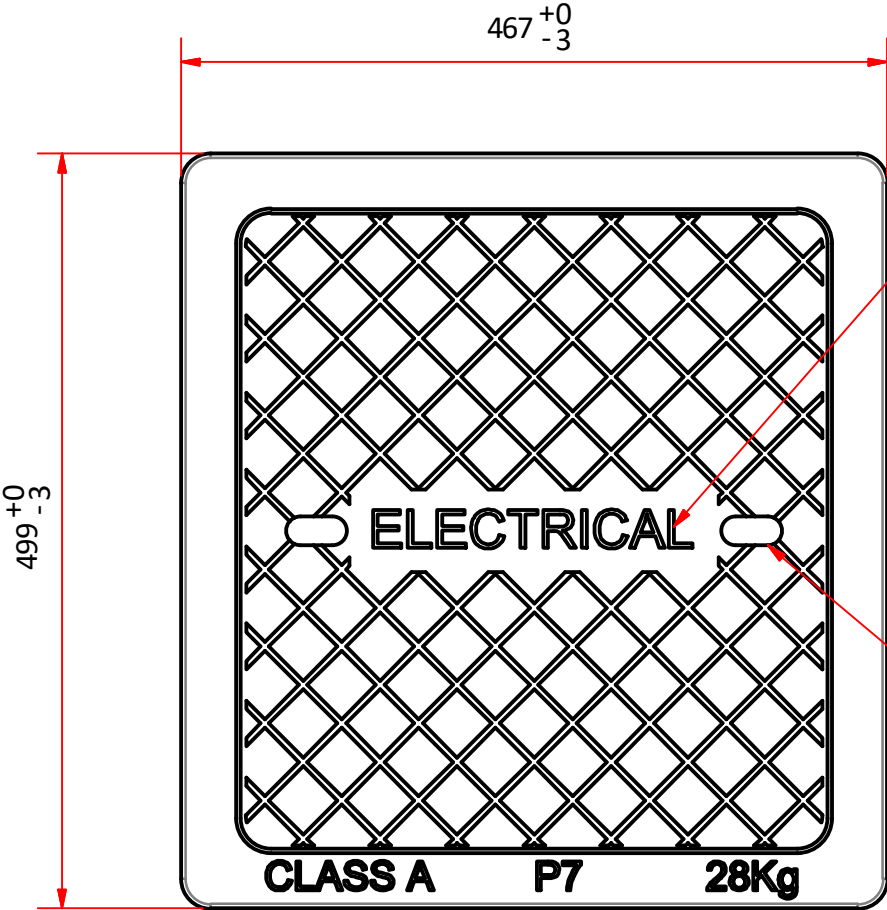


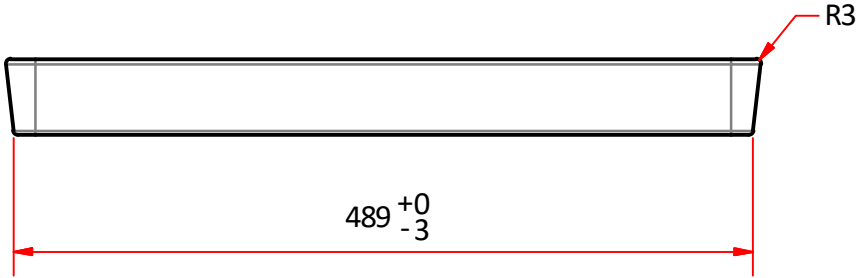
- NOTES:
- 1. MEETS CLASS A DESIGN LOADS AS PER AS3996:2019
 - 2. ALL LIDS TO BE MARKED AS INDICATED
2 mm NOMINAL DEPTH
 - 3. CONCRETE STRENGTH 40 MPa



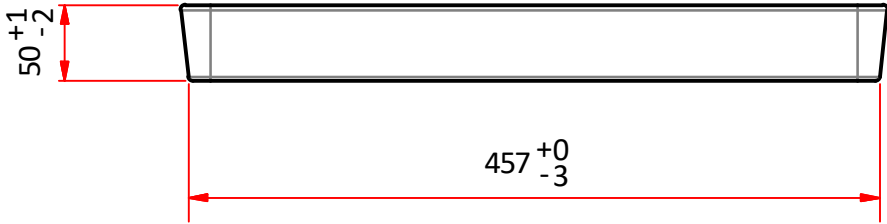
- LABEL VARIANTS;
- 1. ELECTRICAL (TRI UNDERGROUND CODE 10387)
 - 2. COMMUNICATIONS (TRI UNDERGROUND CODE 10386)

x2 SLOTS THRU
21 x 40

TOP VIEW (1:5)



END VIEW (1:5)



SIDE VIEW (1:5)

- General Notes;
- 1. All dimensions are in mm
 - 2. Tolerance on all dimensions ± 3 mm unless stated otherwise

Copyright: TRI Underground Australia Pty Ltd

This instruction and all the information herein is the property of TRI Underground PTY LTD. It must not be copied, made public or used directly or indirectly, including manufacture of the product shown herein, without written approval. This instruction is loaned subject to these conditions and subject to return on demand.

Commercial in confidence



Material CONCRETE	Designed by IMD	Checked by HL	Approved by HA	Date 23/03/2022	Date 22/01/2022
Weight APPROX. 28 kg	TRI Underground Australia			Title CONCRETE COVER P7	
Finish OFF MOULD				Dwg No. 10387	Edition A
					Sheet 1 / 1